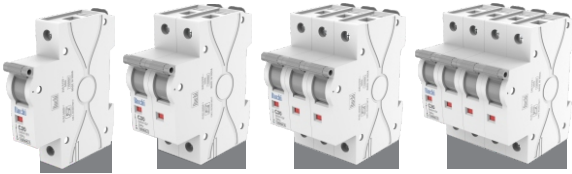
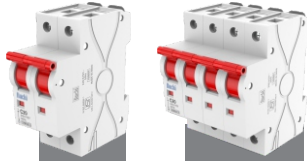


**\* MINIATURE CIRCUIT BREAKERS (CV SERIES)**



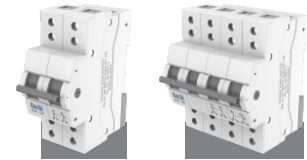
AMP.	SP	DP	TP	FP
6 - 32A.	120.00	286.00	470.00	660.00
40A	167.00	380.00	588.00	790.00
63A	190.00	428.00	705.00	905.00

**ISOLATOR**



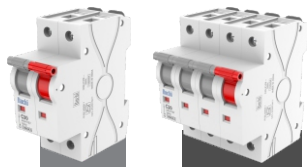
AMP.	2 POLE	4 POLE
40 AMP.	260.00	675.00
63 AMP.	340.00	850.00

**MCB CHANGEOVER**



AMP.	2 POLE	4 POLE
40 AMP.	500.00	990.00
63 AMP.	730.00	1460.00

**RCCB**



AMP.	2P / 30MA	2P / 100MA	2P / 300MA
25 / 40 AMP.	1080.00	1080.00	1080.00
63 AMP.	1175.00	1175.00	1175.00
AMP.	4P / 30MA	4P / 100MA	4P / 300MA
25 / 40 AMP.	1760.00	1760.00	1760.00
63 AMP.	2000.00	2000.00	2000.00

**\* SPN DOUBLE DOOR**



AMP.	LUXURY	CV/CRYSTAL	LEXUS
4 WAY	960.00	565.00	535.00
6 WAY	1105.00	650.00	610.00
8 WAY	1250.00	730.00	700.00
10 WAY	1400.00	815.00	780.00
12 WAY	1535.00	900.00	865.00
16 WAY	1825.00	1100.00	1050.00

**\* SPN SINGLE DOOR**



AMP.	RATE
4 WAY	285.00
6 WAY	345.00
8 WAY	405.00
10 WAY	465.00
12 WAY	520.00
16 WAY	650.00

**\* POLE BOX**

AMP.	RATE
1/2 POLE RCV	115.00
2/3 POLE RUCHI	130.00
3/4 POLE RCV	175.00
4 POLE (LONG)	325.00
6 POLE	265.00



- \* \*
- \* \*
- \* \*
- \* \*

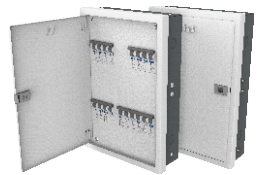
GLASSIO (ACRYLIC DOOR DB)	
WAY	MRP
6 WAY	505.00
8 WAY	575.00
12 WAY	720.00
2/4 WAY	432.00

PVC MCB ENCLOSURE (With Metal Base)	
WAY	MRP
1/2 POLE	50.00
3/4 POLE (Regular)	75.00
3/4 POLE (Long)	85.00
3/4 POLE (Jumbo)	140.00
5/6 POLE	140.00
1/2 PVC RCV (Full PVC)	28.00



TPN SINGLE DOOR	
WAY	MRP
4 WAY	1150.00
6 WAY	1365.00
8 WAY	1835.00
12 WAY	2600.00

TPN DOUBLE DOOR		
WAY	MRP	LUXURY MRP
4 WAY	1800.00	2000.00
6 WAY	2065.00	2380.00
8 WAY	2545.00	2760.00
12 WAY	3720.00	4000.00



AC BOX (W/O PLUG & SOCKET)	
ITEM	MRP
20/2P	285.00
20/3P	360.00
30/3P	360.00
2/3P SOCKET BOX	200.00
16/32A 5 PIN AC BOX	400.00
63A A/C BOX	950.00

AC BOX (WITH PLUG & SOCKET)	
ITEM	MRP
20 / 2P	550.00
20 / 3P	950.00
30 / 3P	1270.00



PHASE SELECTOR SWITCH	
ITEM	MRP
32A / 415 V	3400.00
63A / 415 V	5000.00



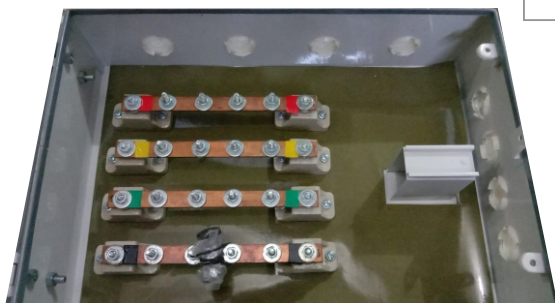
METAL CLAD PLUG & SOCKET	
ITEM	MRP
20A / 2P / PLUG	130.00
20A / 2P / SOCKET	130.00
20A / 3P / PLUG	175.00
20A / 3P / SOCKET	175.00
30A / 3P / PLUG	350.00
30A / 3P / SOCKET	350.00

RF CHANGEOVER SWITCH	
ITEM	MRP
32A DP	1050.00
32A TP	1150.00
63A DP	3500.00
63ATP	4600.00
63A FP	5500.00



LT CONTROL (REVERSE / FORWARD SWITCH)			
ITEM	-	RATE	PKG.
16 / 415 (C.V.)	R/F	480.00	40
16 / 415 (SUPREME)*	R/F	530.00	40
32 / 415 (PLATINA)	R/F	850.00	20
63 / 415	R/F	4500.00	12





### SHEET METAL SWITCH FUSE UNIT (Main Switch)

RATING/AMP. VOLTS.	POLE/TYPE	PRICE	M. PKG.
16/240	S.M.D.P.	465.00	24
32/240	S.M.D.P.	1050.00	10
16/415	S.M.T.P.	1400.00	8
32/415	S.M.T.P.	2050.00	5
63/415	S.M.T.P.	4700.00	2
100/415	S.M.T.P.	7400.00	2
200/415	S.M.T.P.	13200.00	1

### BUSBAR CHAMBERS (COPPER)

AMP.	SIZE (MM)	PRICE	M. PKG.
32/415	250X250X96.5	1800.00	8
63/415	305X305X115	2750.00	4
100/415	383X383X115	3850.00	3
200/415	435X505X140	7000.00	2
300/415	457X608X165	11000.00	1
400/415	510X612X165	12500.00	1
600/415	-	18500.00	1

### HRC BUSBAR CHAMBERS (COPPER)

AMP.	SIZE (MM)	PRICE	M. PKG.
63/145 HRC	305X430X140	3850.00	3
100/415 HRC	330X485X1400	4600.00	2
200/415 HRC	385X605X175	8400.00	1
300/415 HRC	450X688X182	12200.00	1
400/415 HRC	510X760X185	14500.00	1
600/415 HRC	-	21800.00	1

### CHANGE OVER SWITCHES

AMP.	POLE	PRICE	M. PKG.
16/240	2 POLE	750.00	20
32/415	2 POLE	1280.00	8
63/415	2 POLE	2800.00	4
32/415	3 POLE	1650.00	8
32/415	4 POLE	2150.00	5
63/415	4 POLE	5000.00	2
100/415	4 POLE	8100.00	2
200/415	4 POLE	14000.00	1

### RUCHI MCB BUSBAR CHAMBER

AMP.	RATE
63/415	3100.00
100/415	4100.00



**"RCV" BUSBAR & HRC BUSBARS**

AMP.	POLE/TYPE	PRICE
32A / 415	8 X 10	1400.00
63A / 415	10 X 12	1730.00
100A / 415	12 X 15	3000.00
200A / 415	-	4200.00
63A / 415 HRC	12 X 15	2880.00
100A / 415 HRC	12 X 17	3480.00
200A / 415 HRC	-	6500.00



**"RCV" MAIN SWITCH**

AMP.	RATE
32A SMDP	900.00
32A SMTP	1630.00
63A SMTP	3600.00
100A SMTP	5760.00
200A SMP	9120.00

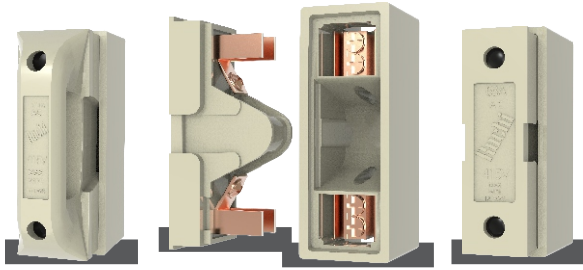


**"RCV" CHANGEOVER**

AMP.	RATE
32/415/2P	1150.00
32/415/4P	1800.00
63/415	4200.00
100/415	6600.00
200/415	10800.00





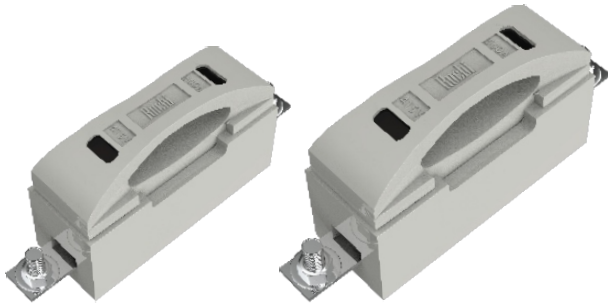


### \* KIT-KAT FUSE UNIT

RATING/AMP/VOLTS	POLE / TYPE	PRICE PER PC.	RCV	M. PKG.
16/240	PILOT	57.00	-	160
16/415	PILOT	90.00	-	80
32/415	MEM	160.00	-	50
32/415	EXCEL	160.00	150.00	45
63/415	EXCEL	315.00	300.00	24
100/415	HANDLE TYPE	640.00	-	12
200/415	HANDLE TYPE	1070.00	-	8

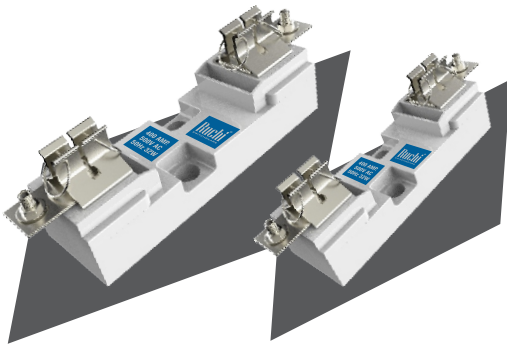
### \* KIT-KAT FUSE LUGS TYPE

RATING/AMP. VOLTS.	POLE/TYPE	PRICE	M. PKG.
100/415	HANDLE YPE (L.T)	735.00	8
200/415	HANDLE TYPE (L.T)	1190.00	6
320/415	HANDLE TYPE (LT.)	2160.00	3
500/415	HANDLE TYPE (L.T)	2612.00	3
200/415	MSEBTYPE	1830.00	3



### RUCHI FUSE BASE

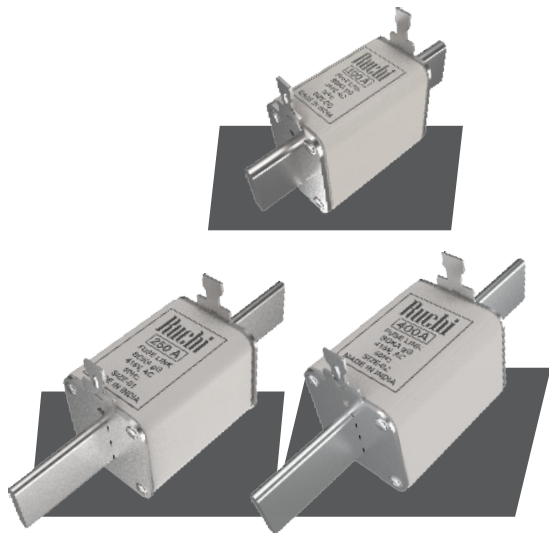
RATING/AMP. VOLTS.	POLE/TYPE	PRICE	M. PKG.
160A	DMC	175.00	-
250A	PORC	550.00	-
400A	PORC	850.00	-
630A	PORC	1250.00	-



### RUCHI HRC FUSELINKS

DIN TYPE - 85361020

RATING/AMP. VOLTS.	SIZE	PRICE	M. PKG.
16/32/50	00	195.00	-
63/80/100	00	195.00	-
125	00	195.00	-
160	00	205.00	-
100/125	1	360.00	-
160	1	360.00	-
200	1	360.00	-
250	1	375.00	-
315	2	550.00	-
400	2	550.00	-
630	3	900.00	-



### HBC FUSELINKS

RATING/AMP. VOLTS.	TYPE	PRICE	M. PKG.
2/4/6/10/16	NS	38.00	-
16/20/25/32	TIA	70.00	-
50A/63A	TIS	70.00	-
6-32A	HF	70.00	-



DOL STARTERS	
WAY	MRP
1.5A - 2.5A	1850.00
2.5A - 4A	1850.00
4A - 6.5A	1850.00
9A - 14A	1850.00
13A - 21A	1850.00



ON LOAD CHANGEOVER WITH ENCLOSURE	
WAY	MRP
63A	5565.00
100A	9200.00
125A	9900.00
160A	10300.00
200A	12200.00



SWITCH FUSE UNIT (SFU) IN ENCLOSURE	
WAY	MRP
63A	4400.00
100A	6200.00
125A	6900.00

MODULAR AC BOX	
ITEM	MRP
MODULAR AC BOX - 25A	525.00



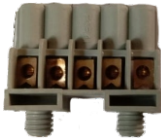
METAL POLE BOX	
ITEM	MRP
METAL POLE BOX 6X8X4	900.00

MCB CHANNEL / DIN RAIL	
ITEM	MRP
DIN RAIL	76/-



SMC / FRP POLE / METER ENCLOSURE	
ITEM	MRP
5" X 6" X 4" with Terminal / Din Rail FRP POLE BOX	425.00
6" X 6" X 4" with Terminal / Din Rail FRP POLE BOX	450.00
10" X 10" X 6 MM FRP POLE BOX	825.00
350 X 270 X 200 MM FRP POLE BOX	1400.00
Single PH FRP Meter Box 300 x 200 x 135	825.00
3 Ph Meter Box 350 x 270 x 200	1400.00
8" x 12" x 135 MM FRP POLE BOX	825.00





**IP 65 DB**

### RUCHI ABS JUNCTION BOXES (IP65)

SIZE	CAT NO.	RATES
88 x 88 x 53	9020	<b>130.00</b>
88 x 88 x 53	9025 with Connector	<b>175.00</b>
98 x 98 x 61	9040	<b>175.00</b>
98 x 98 x 61	9045 with Connector	<b>225.00</b>
139 x 119 x 70	9060	<b>260.00</b>
167 x 125 x 82	9100	<b>345.00</b>
200 x 160 x 98	9250	<b>600.00</b>
	PVC Connector 32A / 4 Way	<b>60.00</b>

### RUCHI ABS JUNCTION BOXES (ECO)

SIZE	CAT NO.	RATES
JB100	100 X 100 X 70	<b>88.00</b>
JB150-110	150 X 110 X 70	<b>150.00</b>
JB150	150 X 150 X 70	<b>200.00</b>
JB200	200 X 155 X 80	<b>232.00</b>
JB255	250 X 200 X 80	<b>310.00</b>
JB300	300 X 250 X 120	<b>665.00</b>
JB400	400 X 350 X 120	<b>1220.00</b>

### AC BOX (IP65/67)

ITEM	RATES
1 SOCKET AC BOX (1006) / 6 WAY	<b>1070.00</b>
3 SOCKET AC BOX (3006) / 6 WAY	<b>1300.00</b>
2 SOCKET AC BOX (2002) / 6 WAY	<b>1500.00</b>
4 SOCKET AC BOX (4004) / 6 WAY	<b>2415.00</b>
6 SOCKET AC BOX (6006) / 6 WAY	<b>3220.00</b>
MULTI SOCKET A/C BOX (4010)/8WAY/4-6 Socket	<b>3000.00</b>
MULTI SOCKET AC BOX (Double + 4p)	<b>710.00</b>
MULTI SOCKET AC BOX (4socket + 4P)	<b>1185.00</b>

### WATER PROOF MCB ENCLOSURE

ITEM	RATES
2P MCB ENCLOSURE (ECO) IP67 TYPE (HT2)	<b>185.00</b>
4P MCB ENCLOSURE (ECO) IP65 TYPE (HT5)	<b>260.00</b>
6P MCB ENCLOSURE (With Indicator)IP67 TYPE (CDN6PT)	<b>800.00</b>
8P MCB ENCLOSURE (ECO) (HT8)	<b>570.00</b>
12 WAY MCB ENCLOSURE IP67 TYPE HT12	<b>825/-</b>
2 WAY MCB ENCLOSURE IP67 TYPE	<b>550.00</b>
4 WAY MCB ENCLOSURE IP67 TYPE	<b>700.00</b>
8 WAY MCB ENCLSOURE IP67 TYPE	<b>1300.00</b>
12 WAY MCB ENCLSOURE IP67 TYPE	<b>2000.00</b>
24 WAY MCB ENCLOSURE IP67 TYPE	<b>3500.00</b>
36 WAY MCB ENCLOSURE IP67 TYPE	<b>5220.00</b>



### RUCHI PLUG & SOCKETS (IP43)

RUCHI	PLUG	PANEL	WALL SOCKET	COUPLER	
16A	2 PIN	110.00	120.00	125.00	140.00
16A	3 PIN	74.00	100.00	115.00	95.00
16A	5 PIN	145.00	165.00	195.00	165.00
32A	3 PIN	145.00	175.00	200.00	175.00
32A	5 PIN	195.00	200.00	225.00	200.00
16A	3 PIN 3 WAY TRISHUL			500.00	
32A	5 PIN 3 WAY TRISHUL			1610.00	

### RUCHI PLUG & SOCKETS (IP67)

RUCHI	PLUG	PANEL SOCKET	COUPLER	
16A	3 PIN	220.00	265.00	265.00
32A	5 PIN	500.00	530.00	530.00
63A	5 PIN	1015.00	1100.00	1100.00
16A	3 PIN	3 Way Trishul		1800.00



### MULTI SOCKET AC BOX (Without Socket)

ITEM	16A / 20A / 32 A / (2/3P)	30A/2P
DOUBLE SOCKET	800.00	900.00
3 SOCKET	1100.00	1150.00
4 SOCKET	1250.00	1400.00
5 SOCKET	1500.00	1700.00
6 SOCKET	1700.00	
7 SOCKET	2000.00 With Handle	
8 SOCKET	2200.00	

### (ABS) Push Button Station

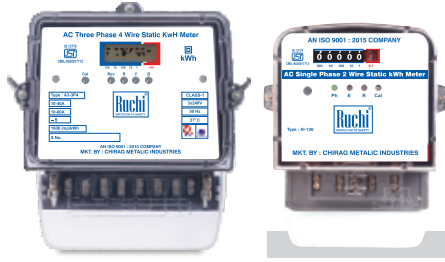
ITEM	
1 WAY	75.00
2 WAY	95.00
3 WAY	118.00
4 WAY	140.00



### RUCHI MCCB ENCLOSURE

ITEM	
H x W Small (DY 100) 3POLE	800.00
14 x 8 Medium (Adjustable)(DY)	1200.00
16 x 10 Big (Adjustable)	1600.00
20 x 10 400 A (Adjustable)	4000.00





### RUCHI METER

PHASE	COUNTER	LCD
1PH	530.00	630.00
3PH	1350.00	1570.00



### HOME SAFE

MCB DP (I)	MRP
32A	325/-

### IMMERSION ROD



ITEM	MRP
1.5 KW (1500W)	550.00
2.0 KW (2000W)	600.00

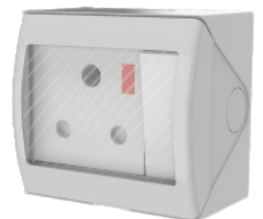
### MFD CONDENSER

ITEM	MRP
MFD CONDENSER - 2.5	30.00



### RUCHI WEATHER PROOF ENCLOSURES IP55

ITEM	RATES
BELLPUSH (1M)	400.00
13A SS Combine (1 Switch + 1 Socket)	675.00
13A - 2Switch + 1Socket Combine	865.00



### INDICATOR

LED INDICATOR 22.5MM	40.00
----------------------	-------



### Modular Conceal Box (1mm/GI)

ITEM	Pkg	Rate	Carton
1/2 m	20	52.00	200
3 m	20	60.00	160
4 m	20	75.00	100
6 m	20	102.00	100
8 sq	5	112.00	80
8 h	10	112.00	80
12 m	5	150.00	60
16 m	5	170.00	80
18 m	5	215.00	80

### PVC Modular Gang Box

Module	Rate
1M	35.00
2M	42.00
4M	52.00
6M	70.00
8M	86.00
9M	95.00
12M	105.00
16M	150.00
18M	160.00

