

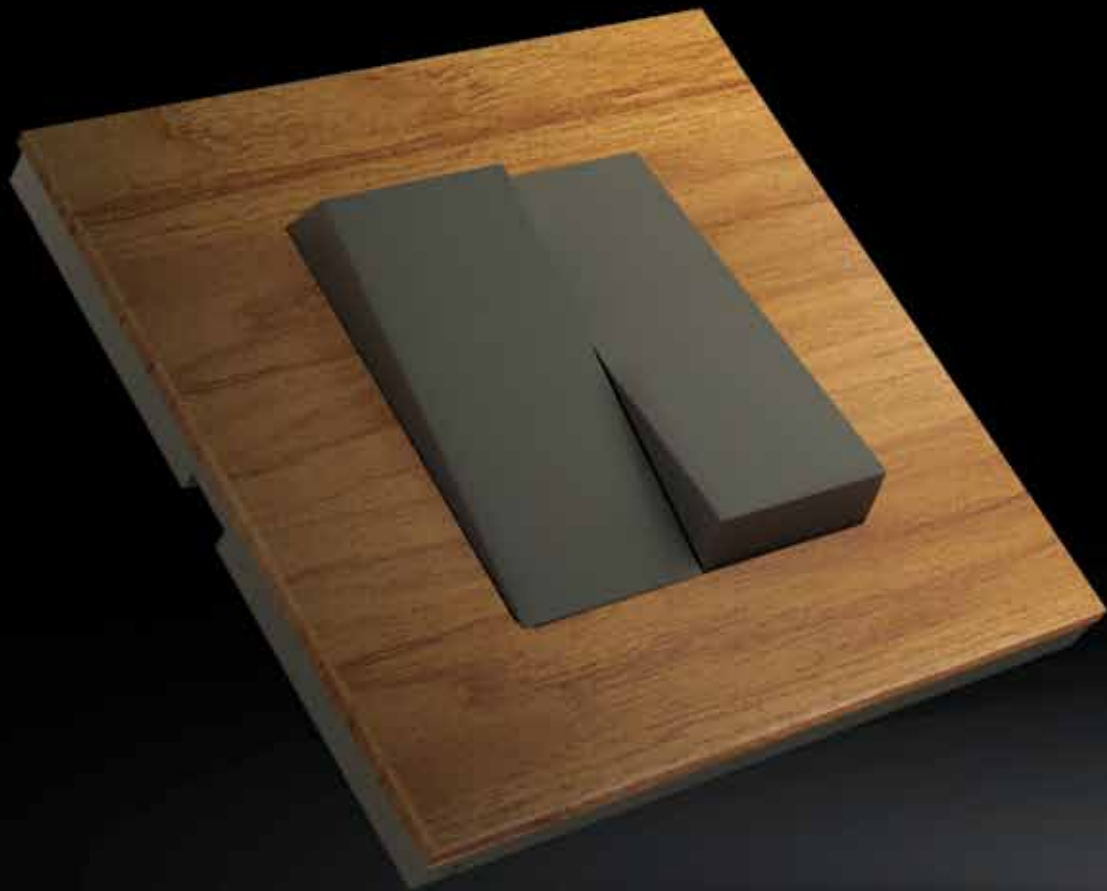


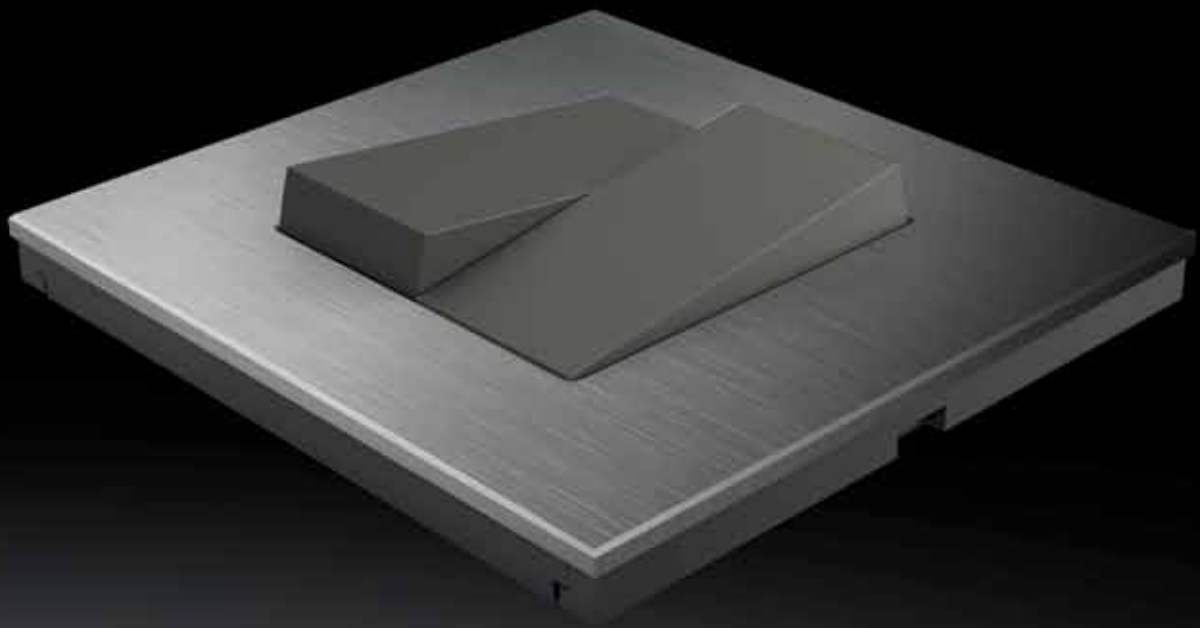
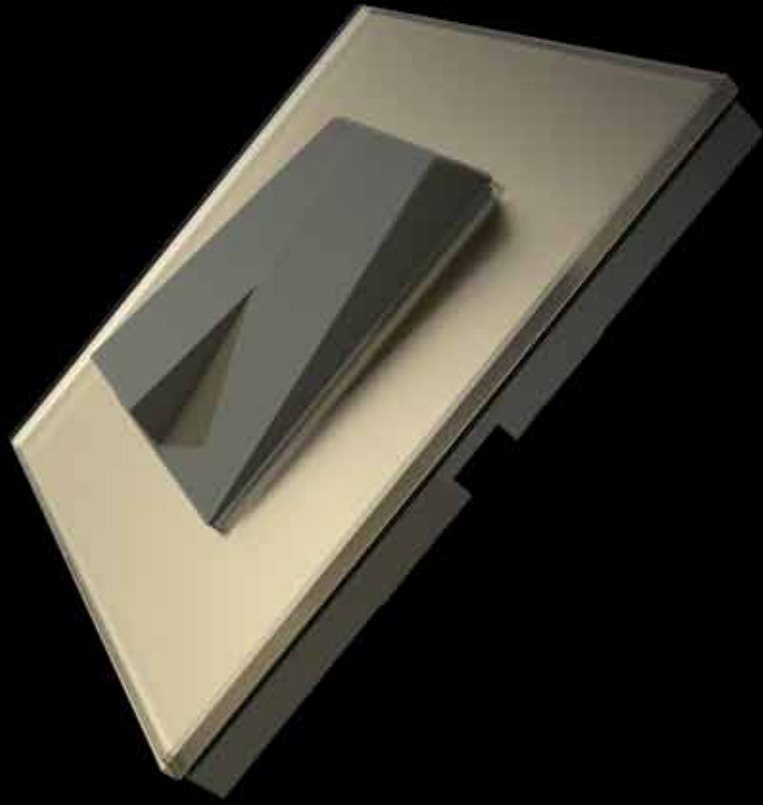
Inspired
By Nature

Amāre

Amāre

Inspired by genuine elements of nature, Amare has been aesthetically designed to complement the latest interior trends. These masterfully crafted wooden, glass and metal switch plates blend in perfectly with your tastefully designed decor and give your home the beauty they deserve, naturally.





Design Ideology

With sleek edges and a minimalistic straight line structure, Amare switch plates are aesthetically designed to enhance your home decor.

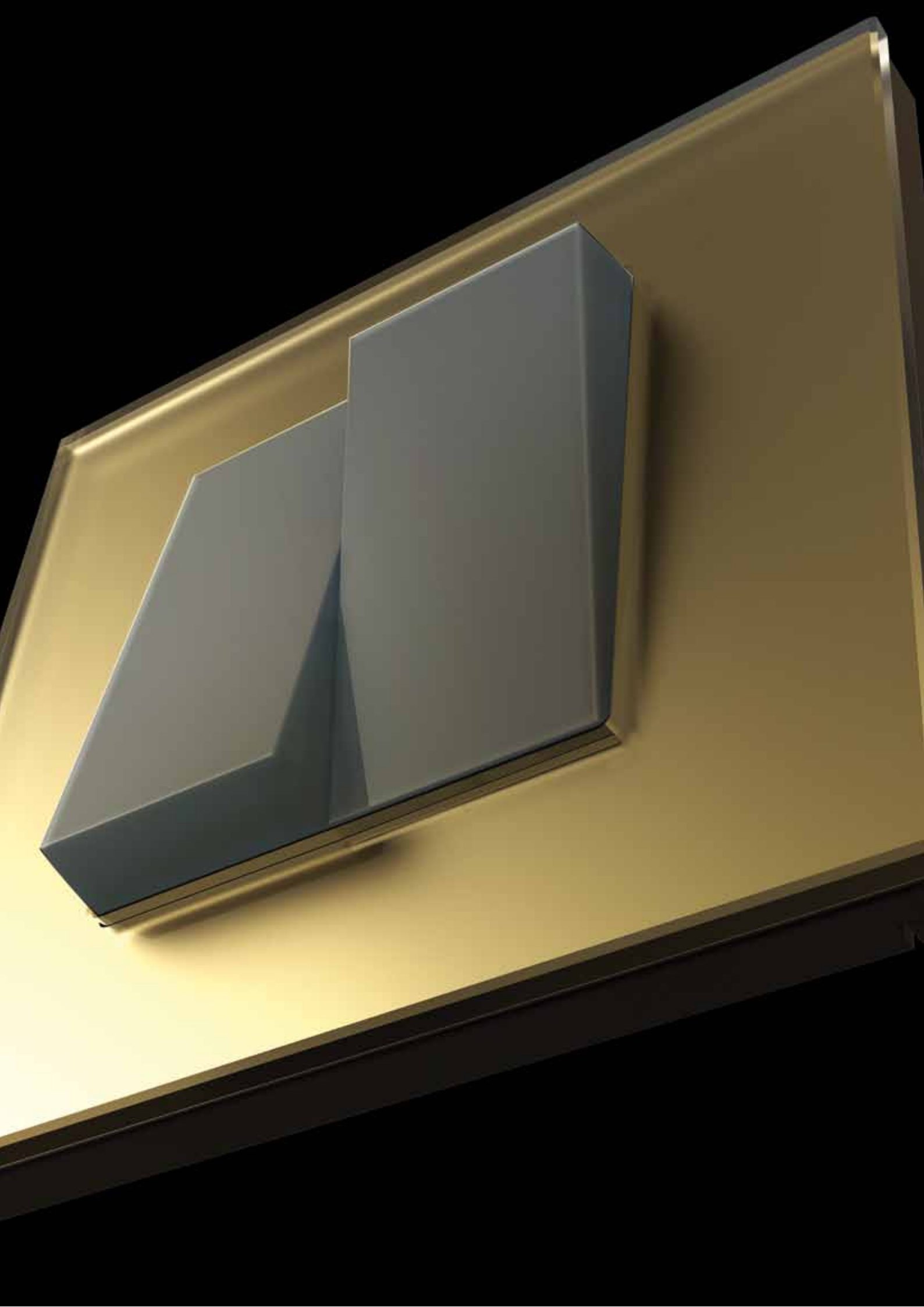
Material & Colour

Amare range comprises of front switch plates made in natural Wood, Glass and Metal finish. And a wide range of contemporary colour plates with option of grey and white switches.

Crafted To Perfection

Not only plates, performance is emboldened through a wide range of modules, to meet the requirements of different application.



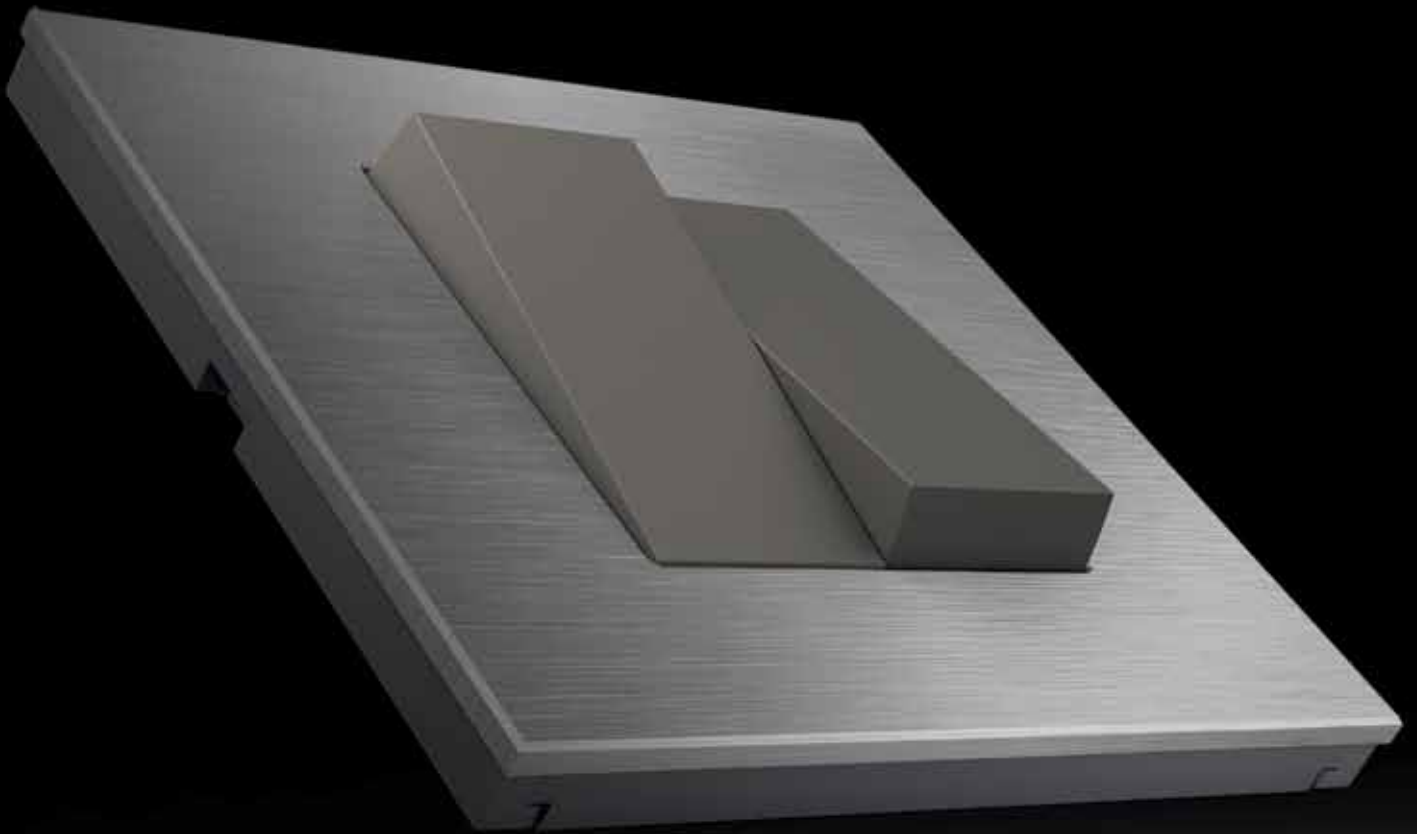


Shine that comes naturally.

These dazzling range of switch plates come with a brushed finish in delicate shades of metallic colours.



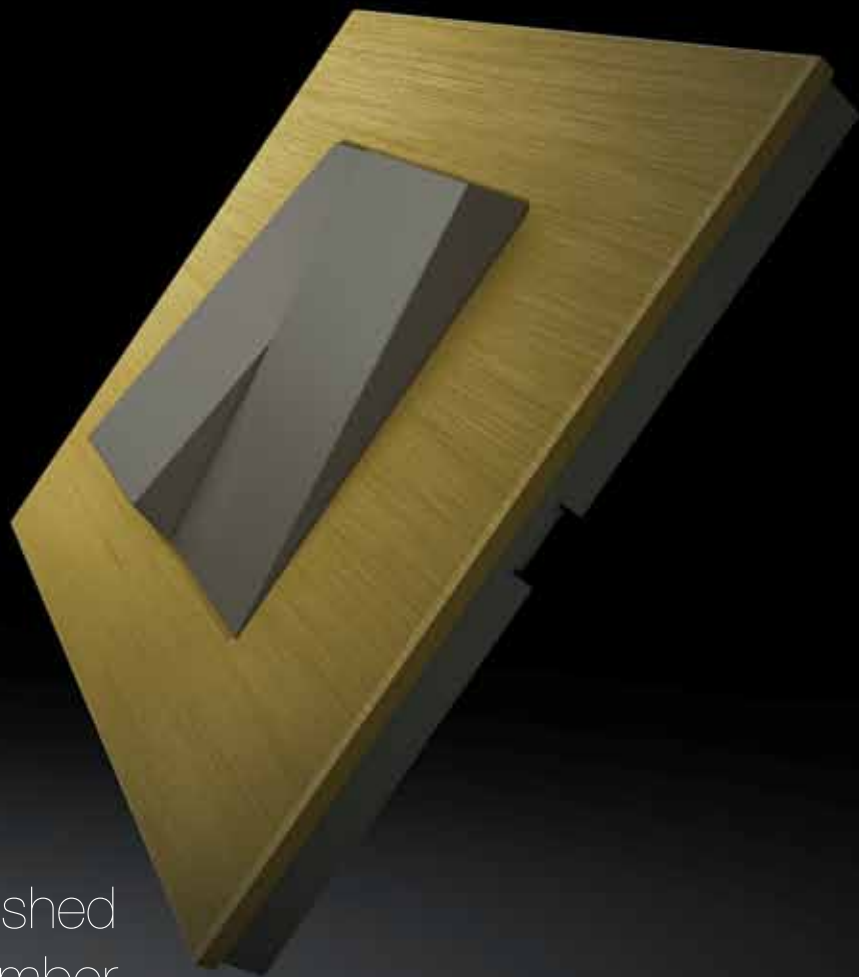
Dazzling range of metallic plates



Lustrous Silver



Eclipse Black

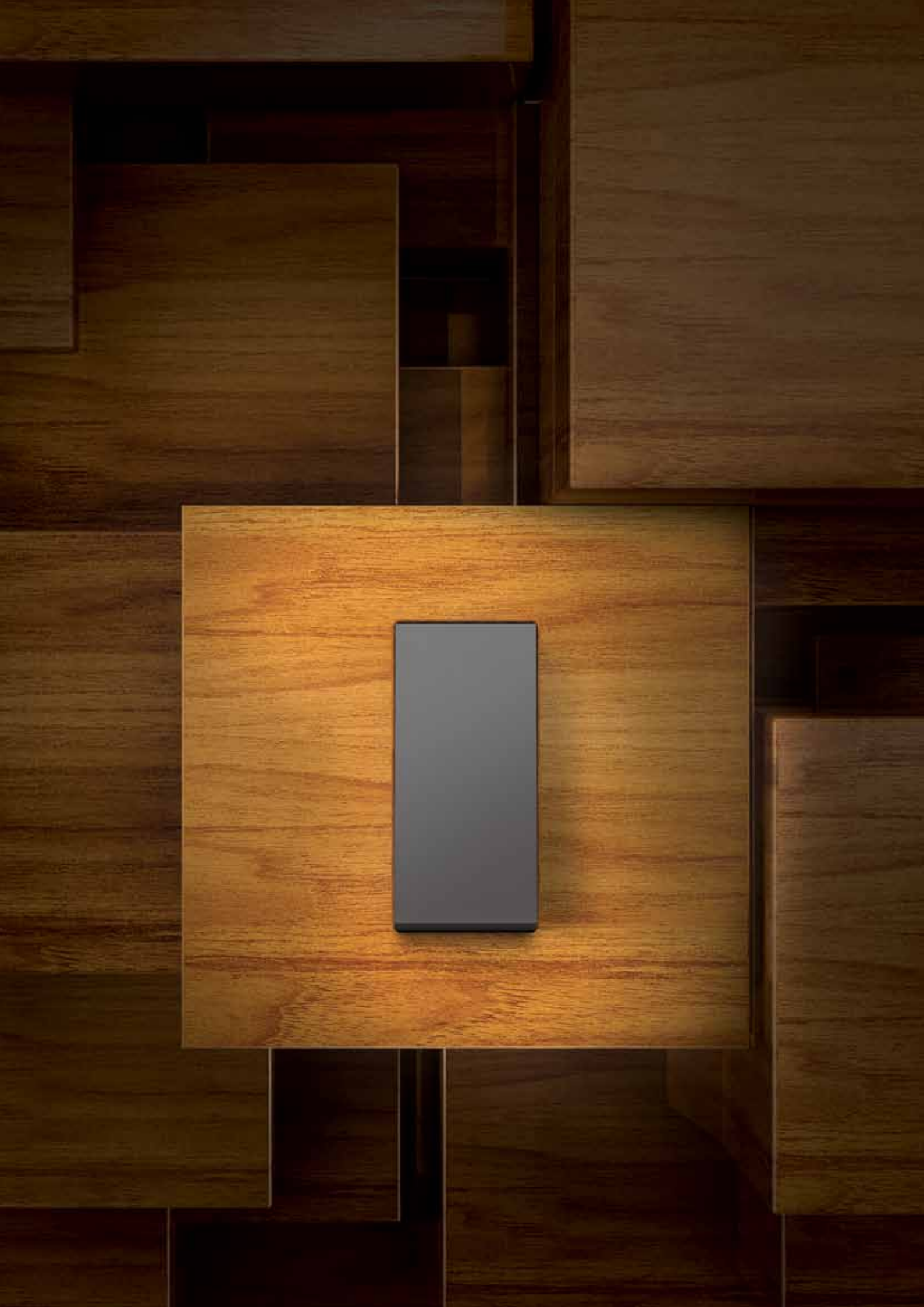


Brushed
Amber



Beauty that comes naturally.

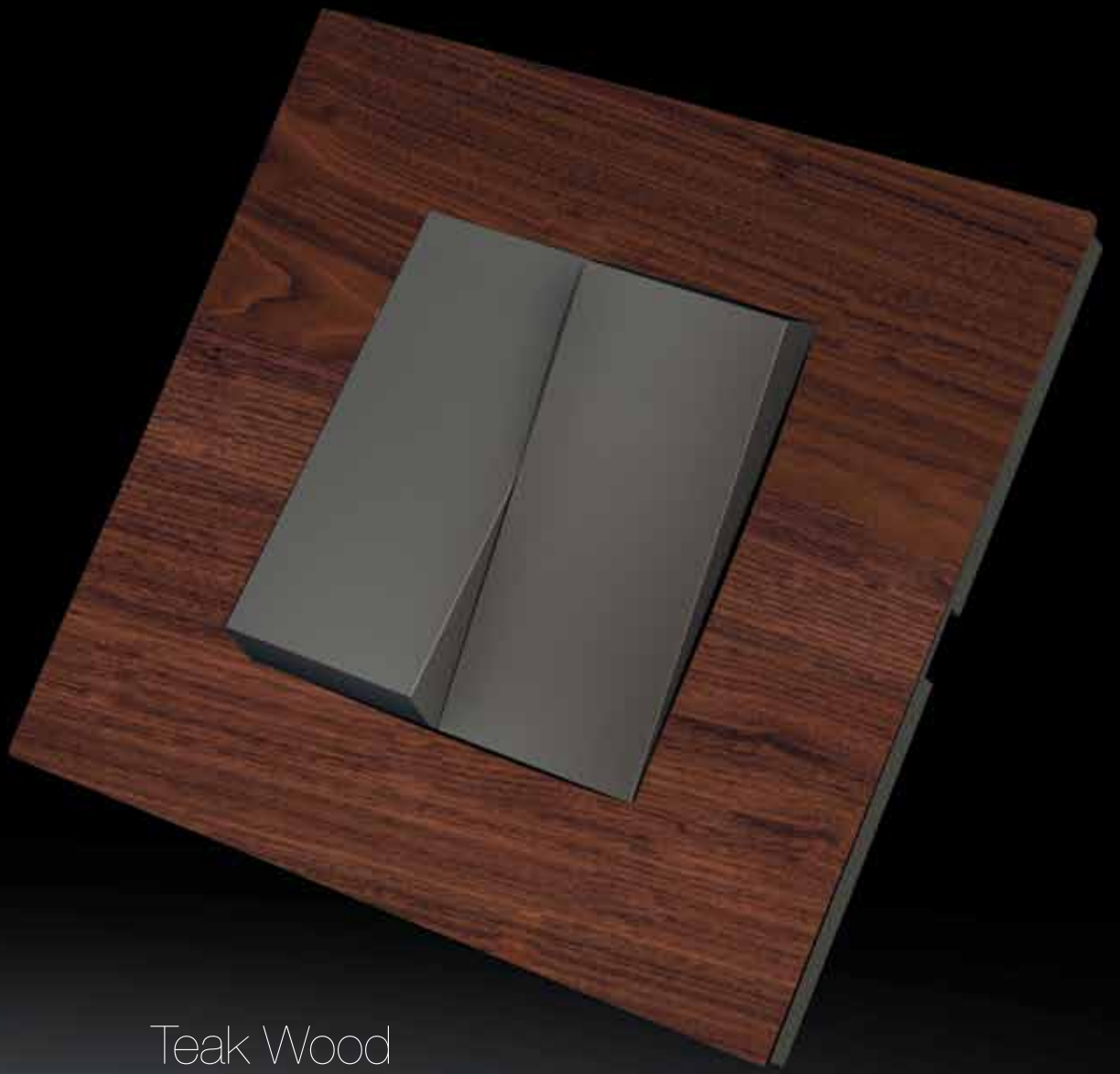
These delightful range of switch plates
come in a sophisticated wooden finish.



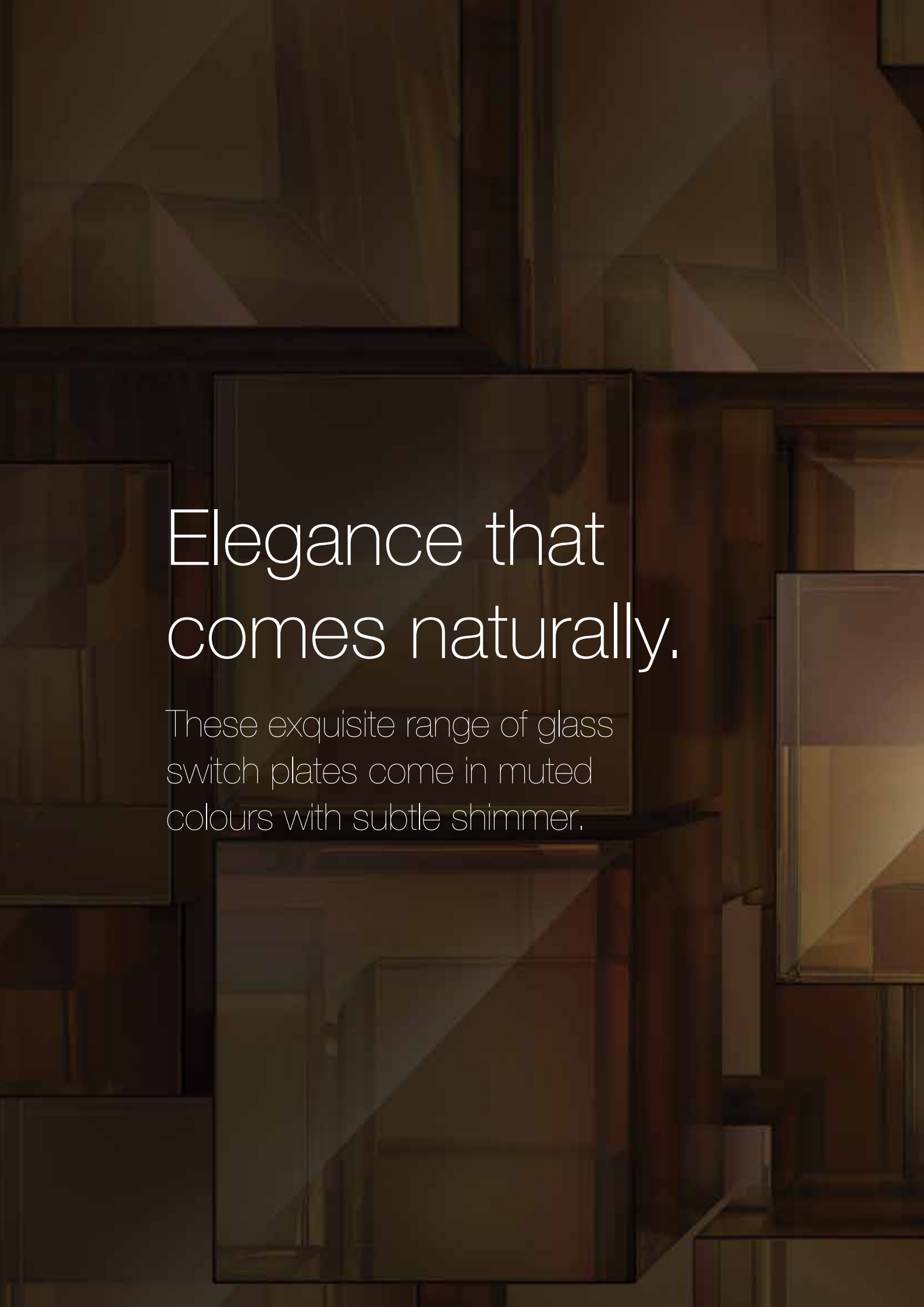
Delightful range of wooden plates

Natural Wood



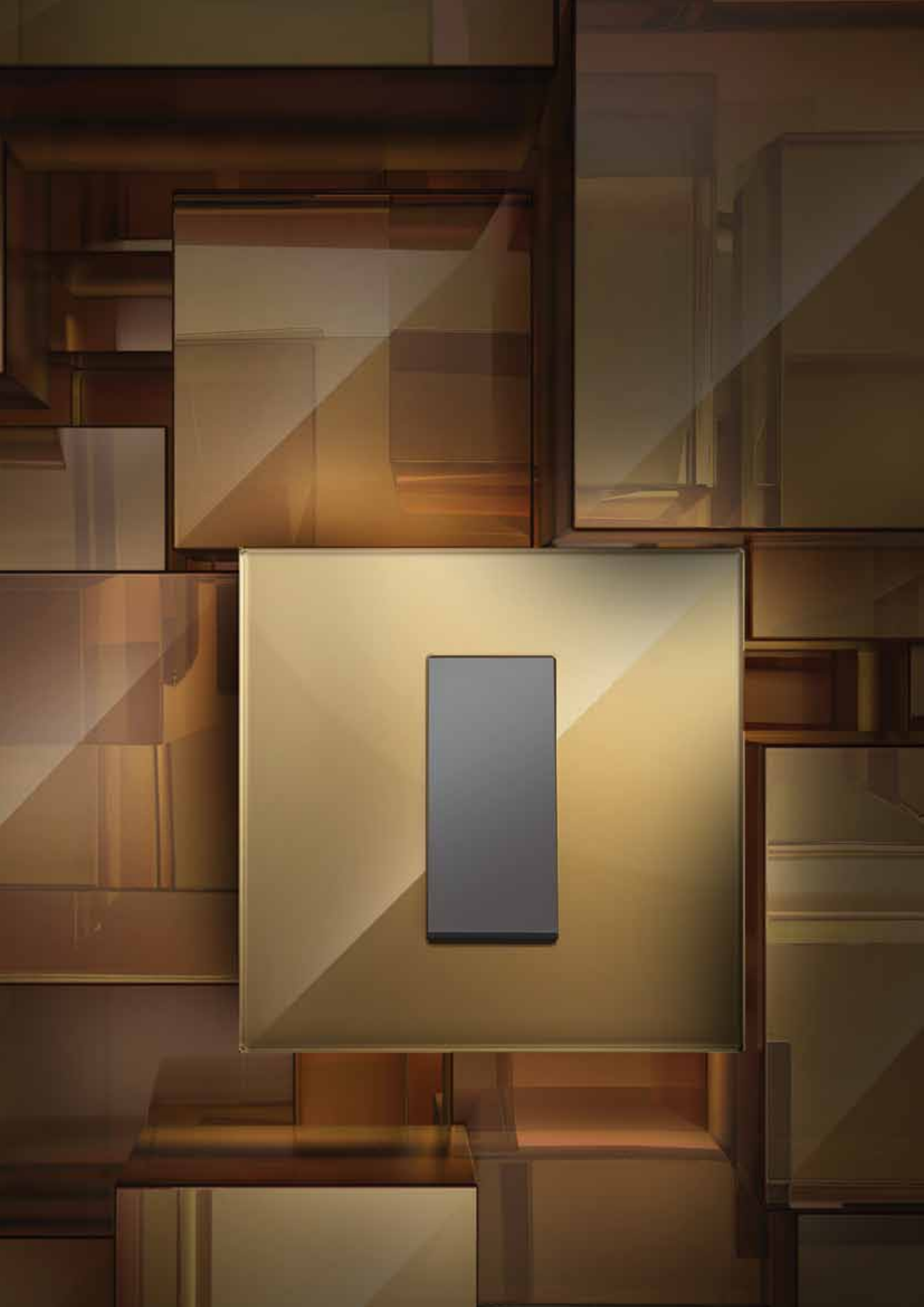


Teak Wood

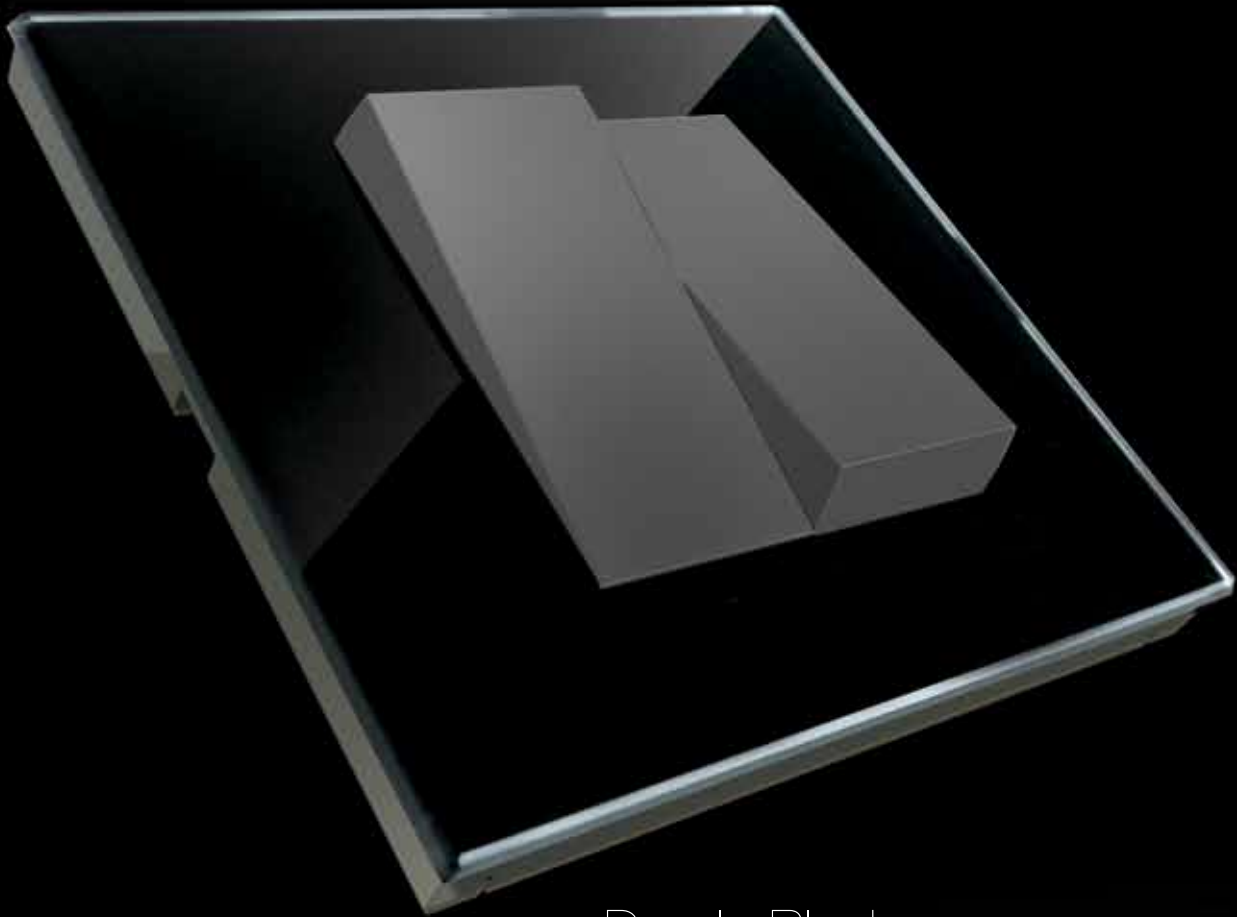


Elegance that comes naturally.

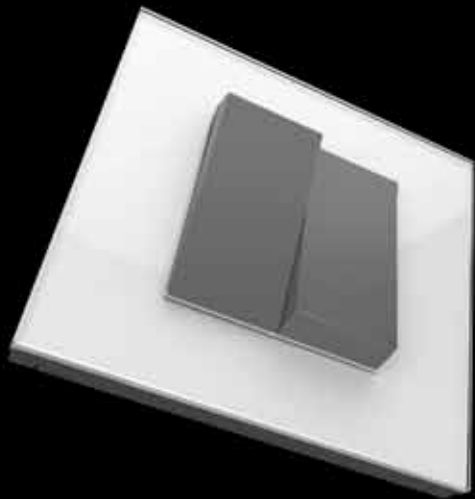
These exquisite range of glass
switch plates come in muted
colours with subtle shimmer.



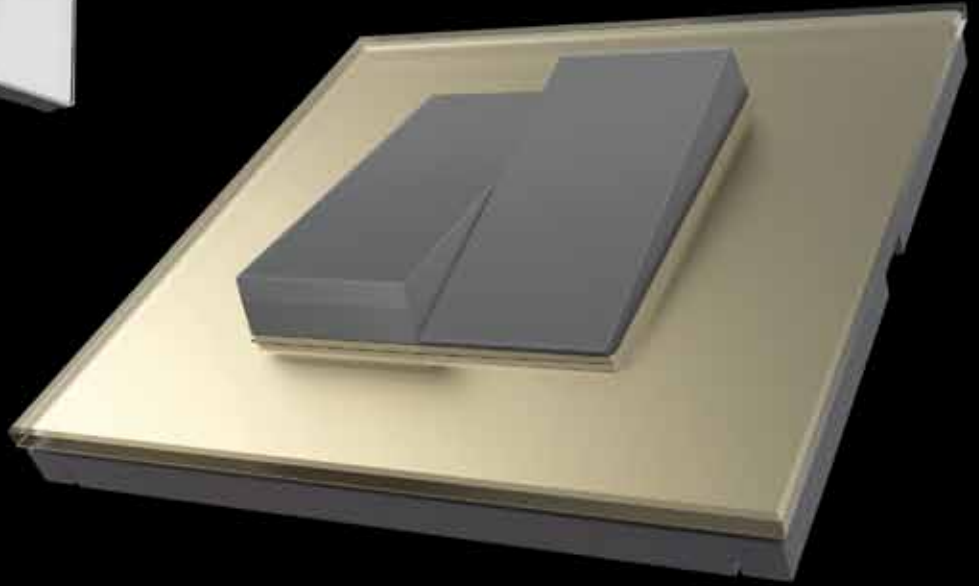
Exquisite range of glass plates



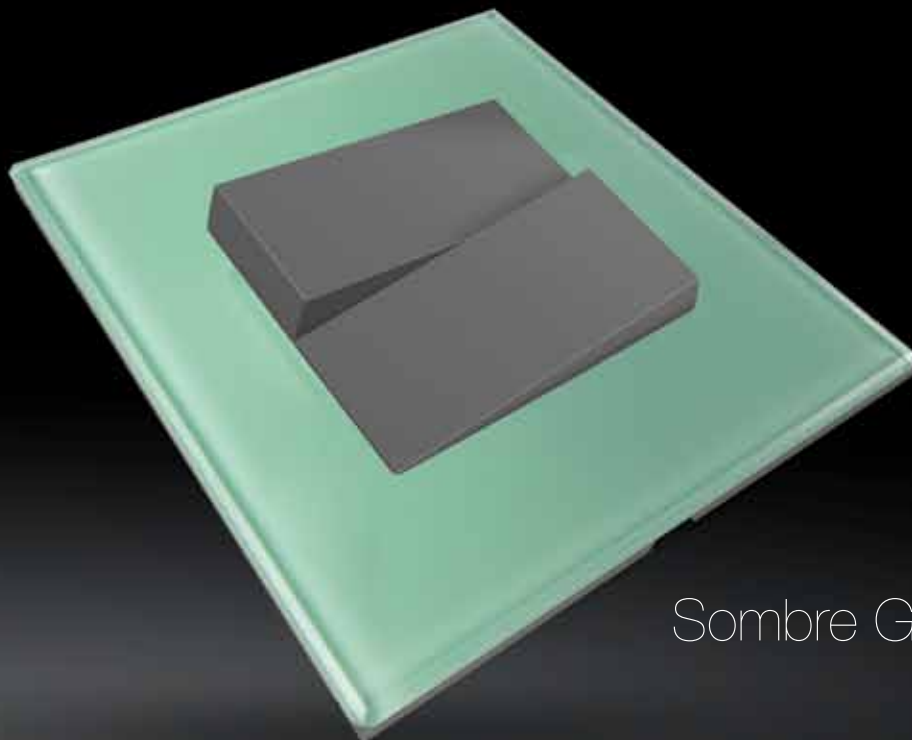
Dazzle Black



Snow White



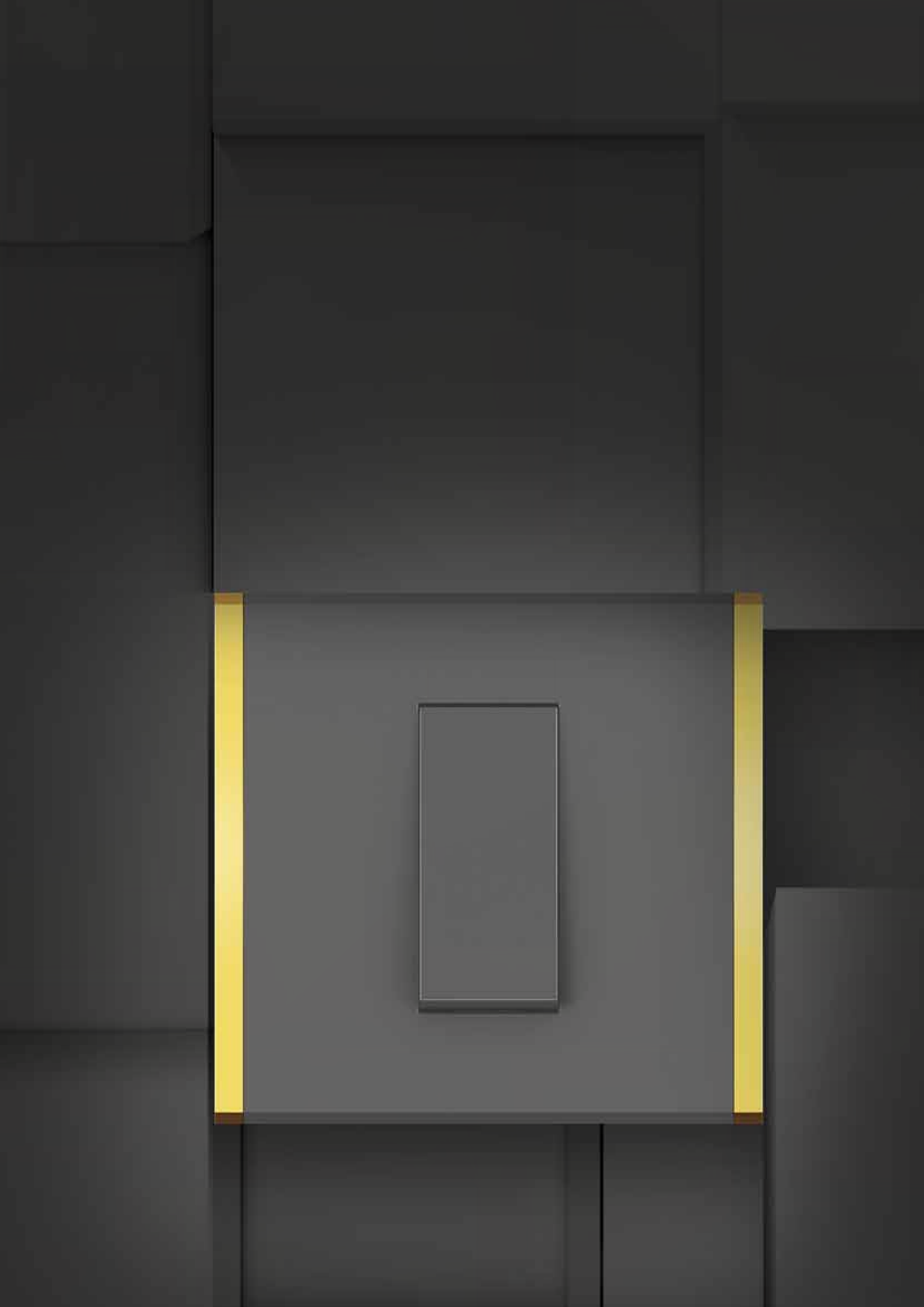
Glittering Sand



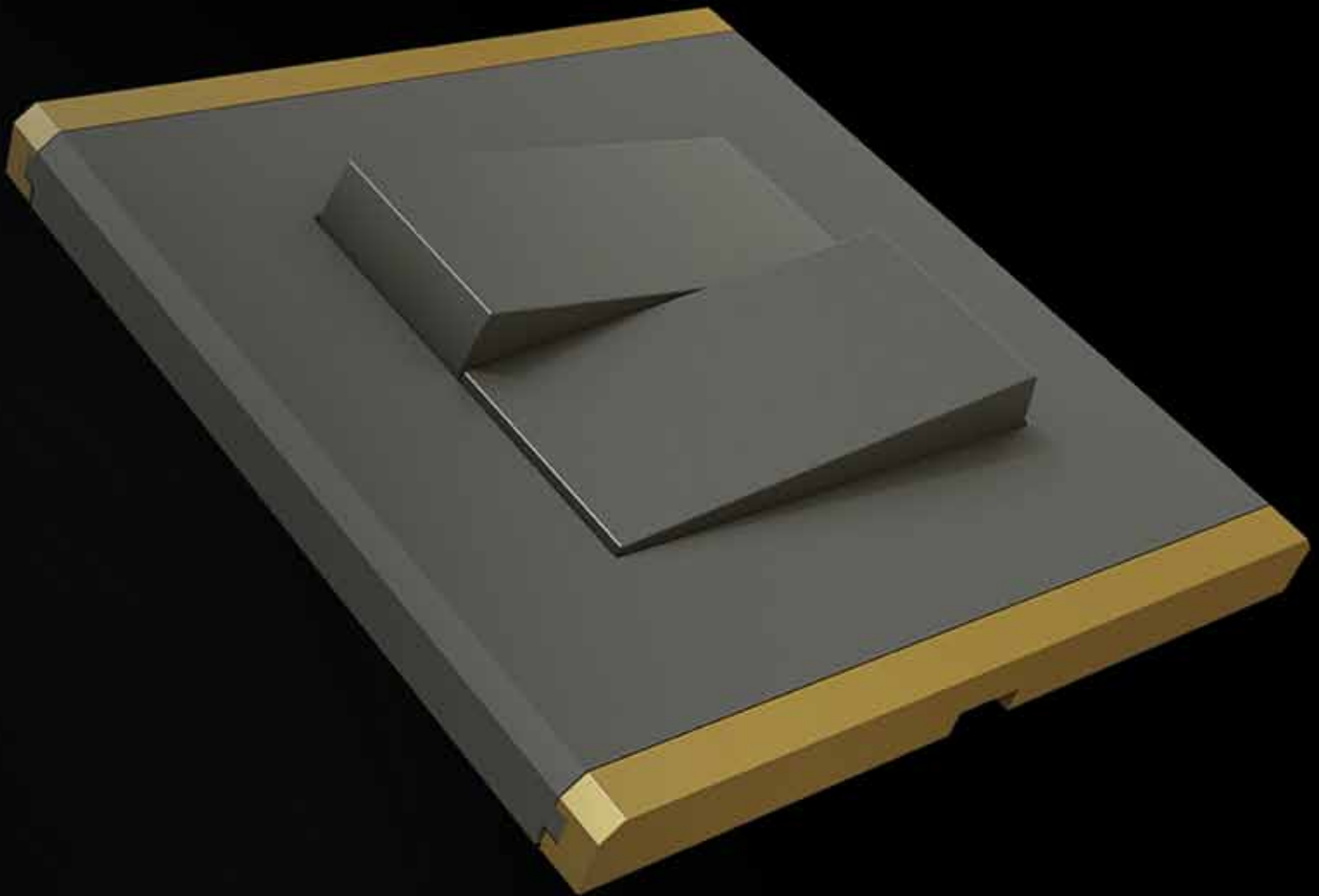
Sombre Green

Design that stands out from the clutter.

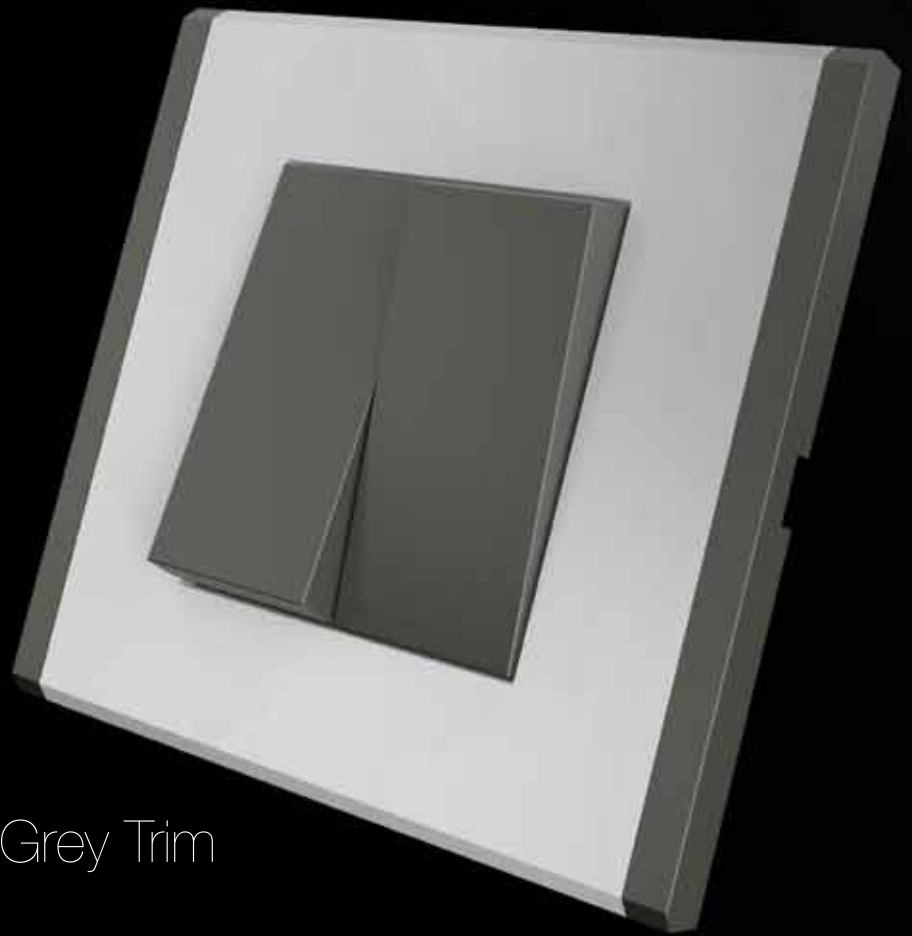
Introducing Amare polycarbonate plates,
with a matte finish and unique side trims.



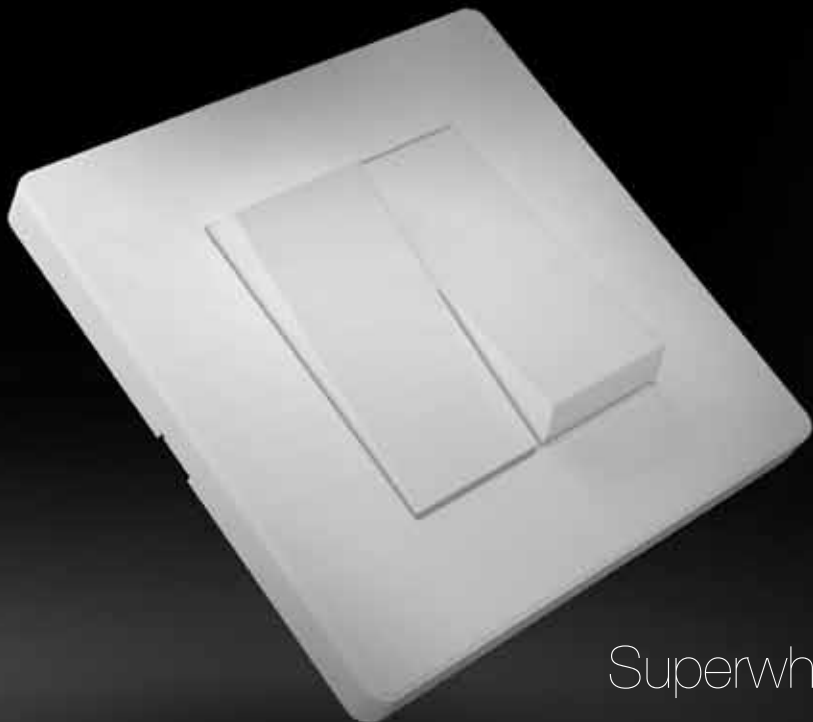
Beautiful range of polycarbonate plates



Golden Trim



Grey Trim



Superwhite

FRONT PLATES

Glass Plates Colour Variants



Glittery Sand



Sombre Green



Snow White



Dazzle Black

Metal Plate Colour Variants



Lustrous Silver



Brushed Amber



Eclipse Black

Wood Plate Colour Variants

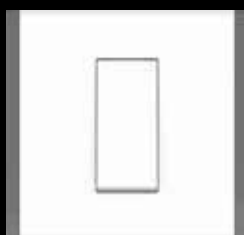


Teak Wood



Natural Wood

Polycarbonate Plate Colour Variants



White Plate with
Grey Trim



Grey Plate with
Golden Trim



White Plate

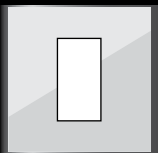


Grey Plate

Features

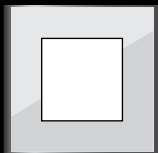
- High engineered front plates in real metal, natural wood and real glass
- Natural Wood plates are processed with anti-termite chemical
- Natural Wood plated are coated with special material - Isolator to with stand any weather conditions and seasoned to overcome bulging and warping
- All Metal plates are treated with special hardness to withstand scratches
- Glass plates are high engineered tempered glass for easy and safe handling
- Insulated film in metal plates to avoid electric shocks
- Trim design in PC plates which adds aesthetics to the front plates
- Trims are offered in Grey colour in Super white plate and Golden trim in Grey plate
- PC plates in two design options – giving more options to customer
- Multilayer plate design for more strength and overcome installation abuse
- Snap fit front plates with easy removal feature and fast installation
- Future proof screw driver slots at the sides
- Plastic plates conforms to glow wire test at 650°C
- RoHS Compliant range in plates

1 Module



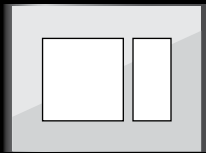
LxBxH : 95x90x8mm
CD : 60mm

2 Module



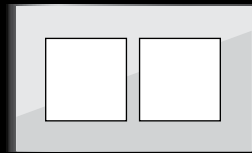
LxBxH : 95x90x8mm
CD : 60mm

3 Module



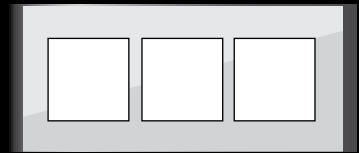
LxBxH : 125x90x8mm
CD : 90mm

4 Module



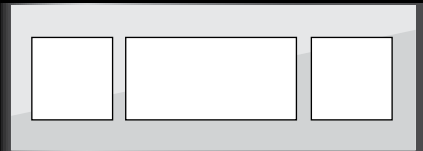
LxBxH : 155x90x8mm
CD : 120mm

6 Module



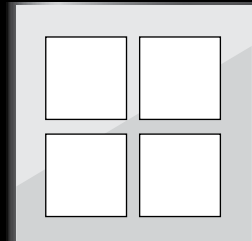
LxBxH : 229x90x8mm
CD : 195mm

8 Module (H)



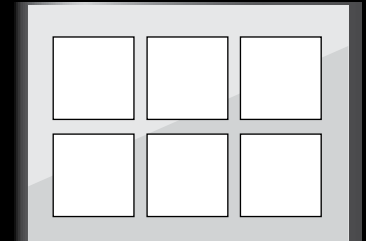
LxBxH : 246x90x8mm
CD : 210.5mm

8 Module (S)



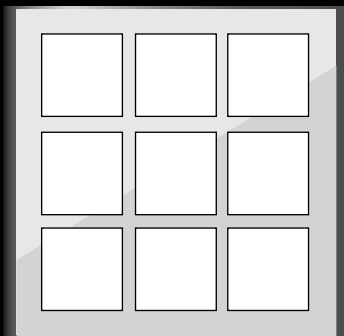
LxBxH : 155x151.5x8mm
CD : 120(L)x60x125(B)mm

12 Module



LxBxH : 229x151.5x8mm
CD : 194(L)x130x60(B)mm

18 Module



LxBxH : 229x225.5x8mm
CD : 194(L)x68x136x200(B)mm

SWITCHES

Switch Colour Variants



10AX 1 Way Switch
(Grey)



10AX 1 Way Switch
(Super White)



10AX 2 Way Switch
(Grey)



10AX 2 Way Switch
(Super White)



10A Bell Push Switch
(Grey)



10A Bell Push Switch
(Super White)



6A Bell Push Switch
With Indicator (Grey)



6A Bell Push Switch
With Indicator
(Super White)



10AX 1 Way Switch
With Indicator (Grey)



10AX 1 Way Switch
With Indicator
(Super White)



10AX Mega Bell Push
with Indicator (Grey)



10AX Mega Bell Push
with Indicator
(Super White)

Features

- Soft switching mechanism – Premium feel while operating the switch
- Positive action rocker switches
- Switches with X rating: designed for inductive and resistive loads
- Base cover chamber – minimizes the visibility of arc
- 3mm minimum switch contact gap between the terminals
- Switches with silver cadmium contacts for long life and continuity
- Self-lubricating plunger made of Zytel for high mechanical life
- Captive screws making this fast and easy
- Front loading and removal feature for easy installation
- Marking on the switch for easy identification of terminals
- Flame retardant, UV stable, High gloss poly carbonate for safe and reliable product
- Switches option – SP and DP operated switches for different application
- Single size screw drives for easy installation
- Wire cut marking on the switch for easy installation
- Colour options in switches – Super white and Grey
- IP20 for complete protection
- RoHS Compliant range
- Tested for 200,000 operations for endurance
- LED indicators for long life and better visibility

Technical Specifications

Standards and Approvals

- All switches complies to IS 3854-1997

Electrical

- Voltage rating: 230V
- Nature of supply: 50Hz
- Current rating: 6AX, 10AX, 16AX, 20ADP, 32ADP
- Contact gap: 3mm

Terminal Capacity

- 6A/10A/16A: 4x 1 Sq.mm, 4x 1.5 Sq.mm, 3x 2.5 Sq.mm, 2 x 4 Sq.mm, 1 x 6 Sq.mm
- 20A DP/32ADP: 4x 4 Sq.mm, 3x6 Sq.mm, 1x 10 Sq.mm, 1 x 16 Sq.mm
- Max load: 6Ax:1.1kW, 10AX: 1.84kW, 16AX:2.94kW

Mechanical

- Ambient Operating temp: -5°C to +60°C
- IP rating: IP20
- Dimension:
2M : 48mm x 52mm
1M : 24mm x 52mm

SOCKET

Socket Colour Variants



6A 5 Pin Socket
(Grey)



6A 5 Pin Socket
(Super White)



6A 3 Pin Socket
(Grey)



6A 3 Pin Socket
(Super White)



6A-16A 3 Pin Combined
Shutter Socket (Grey)



6A-16A 3 Pin Combined
Shutter Socket
(Super White)



6/13A Universal
Socket (Grey)



6/13A Universal
Socket (Super White)



10/25A 3 Pin Combined
Shutter Socket (Grey)



10/25A 3 Pin Combined
Shutter Socket
(Super White)



6A 2 Pin Socket
(Grey)



6A 2 Pin Socket
(Super White)

Features

- All sockets designed with Child safety shutters
- Chamfered design shutter for easy operation
- Firm and rigid engagement for 4mm and 5mm types of plug tops
- Solid brass terminals for better conductivity
- Contact points are corrosion resistant
- Front loading and removal for easy installation
- Captive screws for fast installation
- Sockets in 1M and 2M sizes
- IP20 for complete protection
- Marking on the socket for easy identification of terminals
- Flame retardant, UV stable, High gloss poly carbonate for safe and reliable product
- Single size screw drives for easy installation
- Colour options in switches – Super white and Grey
- RoHS Compliant range
- Tested for 10,000 operations for endurance

Technical specifications

Standards and Approvals

- All sockets complies to IS 1293-2005

Electrical

- Voltage rating: 240V
- Nature of supply: 50Hz
- Current rating: 6A, Terminal Capacity: 1.5 mm Sq.
- Current rating: 6/16A, Terminal Capacity: 2.5 mm Sq.
- Current rating: 10/25A, Terminal Capacity: 2.5 mm Sq.
- Current rating: 6/16A, Terminal Capacity: 2.5Sq mm

Mechanical

- Ambient Operating temp: -5°C to +60°C
- IP rating: IP20
- Module Size: 2M: Dimension: 48mm x 52mm
- Module Size: 1M: Dimension: 24mm x 52mm

FAN REGULATORS & LIGHT DIMMERS



Fan Regulator
(Super White)



Light Dimmer
(Super White)

Features - Fan Regulator

- Ergonomic Design Knob for better aesthetics
- 360° rotation knob for low maintenance
- 4 and 5 step fan controller with incremental steps across all steps in 1M and 2M
- Hum free design
- Soft operation knobs
- High insulation resistance – More than 1000M Ω
- Featured with Safety capacitors to avoid burning of regulators
- Front loading and removal
- Laser marking on the product for long life
- Flame retardant, UV stable, High gloss poly carbonate for safe and reliable product
- Colour options in switches – Super white and Grey
- RoHS Compliant range – not applicable
- Tested for 5,000 cycle electrical endurance

Technical Specifications

Standards and Approvals

- Complies to IS 11037-1984

Electrical

- Voltage rating: 230V
- Nature of supply: 50Hz
- Rated Power: 120W Max calibrated for high speed fans
- Rated Power: 100W Max for 1M Fan regulator

Mechanical

- Ambient Operating temp: -5°C to +60°C
- No of steps: 4 & 5
- IP rating: IP20
- Dimension:
2M : 48mm x 52mm
1M : 24mm x 52mm

Features - Light Dimmer

- Linear brightness control dimmer with smooth rotation
- Full rated dimmers
- Front loading and removal
- Available in 2M size
- Flame retardant, UV stable, High gloss poly carbonate for safe and reliable product
- Colour options in switches – Super white and Grey

Technical specifications

Electrical:

- Voltage rating: 240V
- Nature of supply: 50Hz
- Rated Power: 1000W Max
- Type of load: Incandescent lamps only

Mechanical

- Ambient Operating temp: -5°C to +60°C
- IP rating: IP20
- Module Size: 2M
- Dimension: 48mm x 52mm

Data Socket – RJ45 - RJ11

Data Socket Colour Variants



Data Socket -RJ45
Grey



Data Socket -RJ45
(Super White)



Voice Socket -RJ11
(Super White)

Features - Data Socket – RJ45

- Cat6 compliant RJ45 jack
- Tool free connector – making it easy to install
- Spring loaded shutter for dust free operation
- Front loading and removal for fast and quick installation
- Marking for easy identification of terminals
- Flame retardant, UV stable, High gloss poly carbonate for safe and reliable product
- Colour options in switches – Super white and Grey

Technical specifications

Electrical Specifications:

- No of contacts: 8
- Speed of transmission: 250Mhz 100 Ohms UTP Cable
- Rate of Transmission: 1GB/ sec
- Insulation resistance: >500 M Ohms
- Current rating: 150VAC, 2A
- Dielectric withstand voltage: 1000V, 60Hz/1min
- Current resistance: <20 mill Ohms
- DC Resistance: 0.1 Ohms

Features - Voice Socket – RJ11

- Screw type terminals to avoid loose contact
- Spring loaded shutter for dust free operation
- Front loading and removal
- Marking for easy identification of terminals
- Flame retardant, UV stable, High gloss poly carbonate for safe and reliable product
- Colour options in switches – Super white and Grey
- RoHS Compliant range

Technical specifications

Electrical Specifications

- No of contacts: 2
- Category: 3
- Voltage: 33V rms/70V DC
- Speed of transmission: 16Mhz 100 Ohms UTP Cable
- Rate of Transmission: 10Mbps

TV SOCKET, USB SOCKET & MINI MCB



TV Socket
(Grey)



USB Socket
(Super White)



MINI MCB
(Super White)

Features - TV Socket

- Plated terminals for min signal loss
- Front loading and removal
- Flame retardant, UV stable, High gloss poly carbonate for safe and reliable product
- Colour options in switches – Super white and Grey
- Tested for 10,000 operations for mechanical endurance

Mechanical:

- Ambient Operating temp: -5°C to +60°C
- IP rating: IP20
- Module Size: 1M
- Dimension: 48mm x 52mm

Features - USB Socket

- Single USB socket - 1 x 1.1A
- Short circuit protection available in the output
- Screw type terminals to avoid loose contact
- Front loading and removal
- Marking for easy identification of terminals
- Flame retardant, UV stable, High gloss poly carbonate for safe and reliable product
- Colour options in switches – Super white and Grey
- RoHS Compliant range

Technical specifications

Electrical Specifications

- Input Voltage: 90V to 270V
- Frequency: 50Hz
- Input Power: 300mW
- Output voltage: 5V
- Output current: 2.1Amp max
- Output Power: 10watts max

Features - MINI MCB

- Modular design Mini MCB
- Better aesthetics as it replaces the plug and socket application
- Available in 6A, 10A, 16A, 20A, 25A and 32A rating
- Mini MCB are C curve rated
- Silver graphite contacts
- Trip free mechanism
- Overload and short circuit protection
- Front loading and removal
- IP20 for complete protection
- Marking for easy identification of terminals
- Flame retardant, UV stable, High gloss poly carbonate for safe and reliable product
- Colour options in switches – Super white and Grey
- RoHS Compliant range

Technical specifications

Electrical Specifications

- Rated Voltage: 240V
- Rated Current: 6A, 10A, 16A, 20A, 25A and 32A
- Frequency: 50Hz
- No of poles : Single pole
- Min Voltage: 50V
- Rated short circuit capacity: 3KA
- Terminal Capacity: 2.5 mm Sq

MOTOR STARTER & LED FOOT LAMP



Motor Starter
(Super White)



LED Foot Lamp

Features - Motor Starters

- Technical and construction features complies to IS 3947-4
- Thermal overload protection inbuilt
- Overload and short circuit protection
- Separate switches to ON and OFF
- Front loading and removal
- IP20 for complete protection
- Marking for easy identification of terminals
- Flame retardant, UV stable, High gloss poly carbonate for safe and reliable product
- Colour options in switches – Super white and Grey
- RoHS Compliant range

Technical specifications

Electrical Specifications

- Rated Voltage: 240V
- Rated Current: 20A, 25A and 32A
- Frequency: 50Hz
- Terminal Capacity: 2.5 mm Sq.

Mechanical

- Ambient Operating temp: -5°C to +60°C
- IP rating: IP20
- Module Size: 2M
- Dimension: 48mm x 52mm

Features - LED Foot lamp

- Long life white colour LED based illumination
- Power consumption is less than 2W
- Textured lens for uniform light dispersion
- Front loading and removal
- IP20 for complete protection
- Marking for easy identification of terminals
- Flame retardant, UV stable, High gloss poly carbonate for safe and reliable product
- Colour options in switches – Super white and Grey
- Monoblock Design - 4M

Technical specifications:

Electrical Specifications:

- Rated Voltage: 240V
- Frequency: 50Hz
- Terminal Capacity: 2.5Sq mm

Mechanical:

- Ambient Operating temp: -5°C to +60°C
- IP rating: IP20
- Module Size - 4M Monoblock

HOSPITALITY RANGE



Energy Key Tag-Sensor Based
(Super White)



HDMI Data Socket
(Super White)



Triple RCA
(Super White)



HD15 Data Socket
(Super White)



USB Data Socket
(Super White)

Features - DND and MMR Switch and Indicators

- Outside panel - DND and MMR indicator in 1M
- DND and MMR switch in 1M each
- Laser engraved marking for better visibility
- LED indicators for long life and consistent glow
- Two way switch for DND switches to mute the bell in DND mode if wired
- One way switch for MMR switches
- Low consumption of power and long life because of LED
- Front loading and removal
- IP20 for complete protection
- Marking for easy identification of terminals
- Flame retardant, UV stable, High gloss poly carbonate for safe and reliable product
- Colour options in switches – Super white and Grey

Technical specifications:

Electrical Specifications:

- Rated Voltage: 240V
- Frequency: 50Hz
- Terminal Capacity: 2.5Sq mm

Mechanical:

- Ambient Operating temp: -5°C to +60°C
- IP rating: IP20

Features - Energy Key Tag switch

- 30A Electronic Key tag switch
- Modular in design – 2M
- LED marking for Key card slot as locator in dark
- Sensor based switching mechanism for more operating life and better contact
- 30 sec off time delay for the customer convenience
- Designed to take in magnetic door lock cards
- Designed for EB and Genset power for input current
- Front loading and removal
- IP20
- Marking for easy identification of terminals
- Flame retardant, UV stable, High gloss poly carbonate for safe and reliable product
- Colour options in switches – Super white and Grey

Technical specifications:

Electrical Specifications:

- Rated Voltage: 240V
- Frequency: 50Hz
- Load capacity: 30A
- Terminal Capacity: 2.5Sq mm

Mechanical:

- Ambient Operating temp: -5°C to +60°C
- IP rating: IP20
- Module Size: 2M
- Dimension: 48mm x 52mm
- Note: please refer instruction leaflet for assembly

Features - Shaver socket

- Engineered with step down transformer to take in 110v and 230V
- Designed to take in international 2 pin sockets
- Shutter socket for better safety
- Mono- block design
- IP20
- Marking for easy identification of terminals
- Safety overload protection
- Flame retardant, UV stable, High gloss poly carbonate for safe and reliable product

Technical specifications:

Electrical Specifications:

- Rated Input Voltage: 240V
- Output voltage: 110V/230V
- Output power: 15VA (Max) shaver only
- Frequency: 50Hz
- Terminal Capacity: 4Sq mm

Mechanical:

- Ambient Operating temp: -5°C to +60°C
- IP rating: IP20
- Monoblock design : 4M size

HD15, HDMI Socket, USB Data Port,

Used to connect electronic devices where in customer wants to use the socket for data transfer through HD15, HDMI, USB modules

Features

- Modular in design –1M
- Front loading and removal
- IP20
- HD15, HDMI and USB data socket are provided with female connector cable for easy installation with cable length of 100cms
- Triple RCA are supplied with terminal block

Mechanical:

- Ambient Operating temp: -5°C to +60°C
- IP rating: IP20
- Module Size: 1M
- Dimension: 24mm x 52mm

MANUFACTURING PROCESS



Injection Moulding

- In house facility with centralized PLC controlled material feeding system & de-humidifier
- Latest machines from L & T Demag
- On-line data recording of process control parameters
- Automated machine maintenance monitoring system
- Future plan for robotic systems



Material Handling System

- Special Purpose Machines for 100 % online testing
- Chattering Test
- HV testing
- Contact Resistance Test
- Force to operate
- Load Test



SPM Switch testing

- SPM Screw Tightening & Testing for Athena
- Continuity
- Screw Tightening at set torque
- Contact resistance
- Chattering (Zero Contact error)-Unique Feature
- High Voltage Current
- Force to operate Switch-Unique Feature



CNC Machines

- Charmilles Switzerland-Best name in the world
- Auto programming on Wire Cut
- 100% safety through fume extraction system



Lab

- Test Lab in Baddi is well equipped with all the latest equipments as per BIS requirement
- All Mechanical, Electrical & Visual parameters are being checked in Lab
- All type of Tests Like Routine, weekly, Quaterly & Yearly Tests are being performed as per STI (scheme of Testing & Inspection)

Crabtree shall repair or replace products, at their discretion, if the products are found to be defective, solely as a result of faulty material and/or workmanship, within 10 years from the date of purchase, in the case of Electro-mechanical wiring device products. The guarantee for all mains related Electronic wiring products viz. dimmers, step fan regulators, indicator modules shall be for a period of two years from the date of purchase. For Color range, Wood, Metal, Glass warranty is for 2years against any colour related issues.

Guarantee does not include Crabtree mounting boxes. The guarantee defines the Company's entire liability and does not cover consequential loss or damage, or reinstallation cost arising from defective product. The Company reserves the right to change/improve the design, without prior notice. In such cases, replacements shall be carried out, with design of the accessories prevailing at that point in time.

The guarantee for all products shall be rendered null & void:

- 1) If the product is altered, dismantled or rectified.
- 2) If the original Crabtree mounting boxes have not been used to mount the Plates and accessories.

Terms & Conditions

- Prices are in Indian ₹.
- All prices are on Maximum Retail Price (MRP) basis inclusive of Excise Duty and VAT/Sales Tax. Freight / Delivery charges if paid by Havells shall be on behalf of customer only.
- Goods are despatched by us on Purchaser's risk. All claims for loss, damage or shortage will be filed by the Purchasers directly with the carriers.
- Disputes, if any are subject to Delhi jurisdiction only.
- This Price List supercedes all our previous Price Lists.
- Prices are subject to change without notice.
- Company reserves the right to issue amendments, which may arise due to any errors in the price list.

Although every effort has been made to ensure accuracy in the compilation of the technical detail within this publication. Specifications and performance data are constantly changing. Current details should therefore be checked with Havells Group.



REGIONAL & BRANCH OFFICES:

NORTH - REGIONAL OFFICE: Corporate Office: QRG Towers, 2D, Sector-126, Expressway, Noida-201304, Tel: 0120-3331000, **Delhi:** Tel: 011-47676700, 23888200, **Chandigarh:** Tel: 0172-4232400-401, **Dehradun:** Tel: 0135-6670202, **Noida / Haryana:** Tel: 0120-3331000, **Ludhiana:** Tel: 0161-4676000 / 24, **Jammu:** Tel: 0191-2478330, 2479330, **Sri Nagar:** Tel: 0194-2490431, **Jaipur:** Tel: 0141-3914645, 3988210, **Jodhpur:** Tel: 0291-9214201640 / 45, **Lucknow:** Tel: 0522-6672100, **Kanpur:** Tel: 0512-6710400, 6710409

EAST - REGIONAL OFFICE: Kolkata: ICC Tower, 5th Floor, 4 India Exchange Place, Kolkata-700001, Tel: 033-40129851/52, **Bhubaneswar:** Tel: 0674-6668101/102/103/104, **Guwahati:** Tel: 0361-2134521, 2458923, 2460355, **Siliguri:** Tel: 0353-2525907, **Ranchi:** 0651-2244861, 2244862, 2244864, 2244868, 2244869, **Jamshedpur:** Tel: 0657-6542492, 09234369436, **Patna:** Tel: 0612-2207221, 2207222, 2207223, 2655518

WEST - REGIONAL OFFICE: Mumbai: 1271, Solitaire Corporate Park, Bldg. No. 12, 7th Floor, Andheri - Ghatkopar Link Road, Chakala, Andheri (East), Mumbai- 400093. Ph.: 022 - 67298600-602, **Ahmedabad:** Tel: 079-40061111, 40060738-740, **Indore:** Tel: 0731-2572340-41, 4009998 (Airtel), **Rajkot:** Tel: 0281-2481112, 2921212, **Nagpur:** Tel: 0712-2240932, 2242692, 2242699, **Pune:** Tel: 020-64016413 / 14, **Raipur:** Tel: 0771-4243400 / 01, **Surat:** Tel: 0261-2350137, 9979890137, **Jabalpur:** Tel: 0761-4064491

SOUTH - REGIONAL OFFICE: Chennai: Sigapi Achi Building, No. 18 / 3, 6th Floor, Rukmani Lakshminpathy Road, Egmore, Chennai-600008, Tel: 044-42280600, 605, **Bangalore:** Tel: 080-49075000, **Coimbatore:** Tel: 0422-4550200, 2305199, 2306199, **Hyderabad:** Tel: 040-27533372, 27533355, 27533632, 66320407/0408/6401/6402, **Kochi:** Tel: 0484-4099000, **Vizag:** Tel: 0891-6514339, **Vijayawada:** Tel: +91-9247058847/57, **Calicut:** 0495-4019194, **Madurai:** 0452-4267022, **Trivandrum:** 0471-4015323, **Hubli:** 0836-4248600, **Trichy:** 09944460160

Representative Offices: • Goa • Solapur • Gwalior • Kathmandu • Bhopal

Havells India Ltd.

Corp. Office: QRG Towers, 2D, Sector-126,

Expressway, Noida-201304 (U.P.),

Ph. +91-120-4771000, Fax: +91-120-4772000,

E-mail: info@crabtreeindia.com, www.crabtreeindia.com

Consumer Care No.: 1800 103 1313 (All Connections), 011-4166 0303 (Land line)

